



Sieć Zachodniopomorska Ośrodków
Wsparcia Ekonomii Społecznej

SZOWES

WEST POMERANIAN NETWORK
OF SOCIAL ECONOMY SUPPORT CENTERS

SOCIAL IMPACT

The positive impact of social entrepreneurship in local communities

Paweł Klimek

Head of International Cooperation and Development



diesis
network

Boosting the development of social entrepreneurship in local communities, 23.06.2022

SZOWES

WEST POMERANIAN NETWORK
OF SOCIAL ECONOMY SUPPORT CENTERS

Network of **6** Partners with **20** years of experience in the social economy

8 years of working together for the social economy development
in the West Pomerania region.

Ongoing daily development support for over **600** SE entities/enterprises

Incubation of **1,650** jobs in social economy entities.

Support for more than **2 500** social initiatives in region.



Sieć Zachodniopomorska Ośrodków
Wsparcia Ekonomii Społecznej

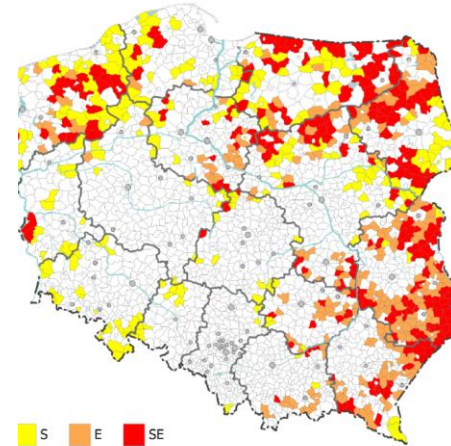
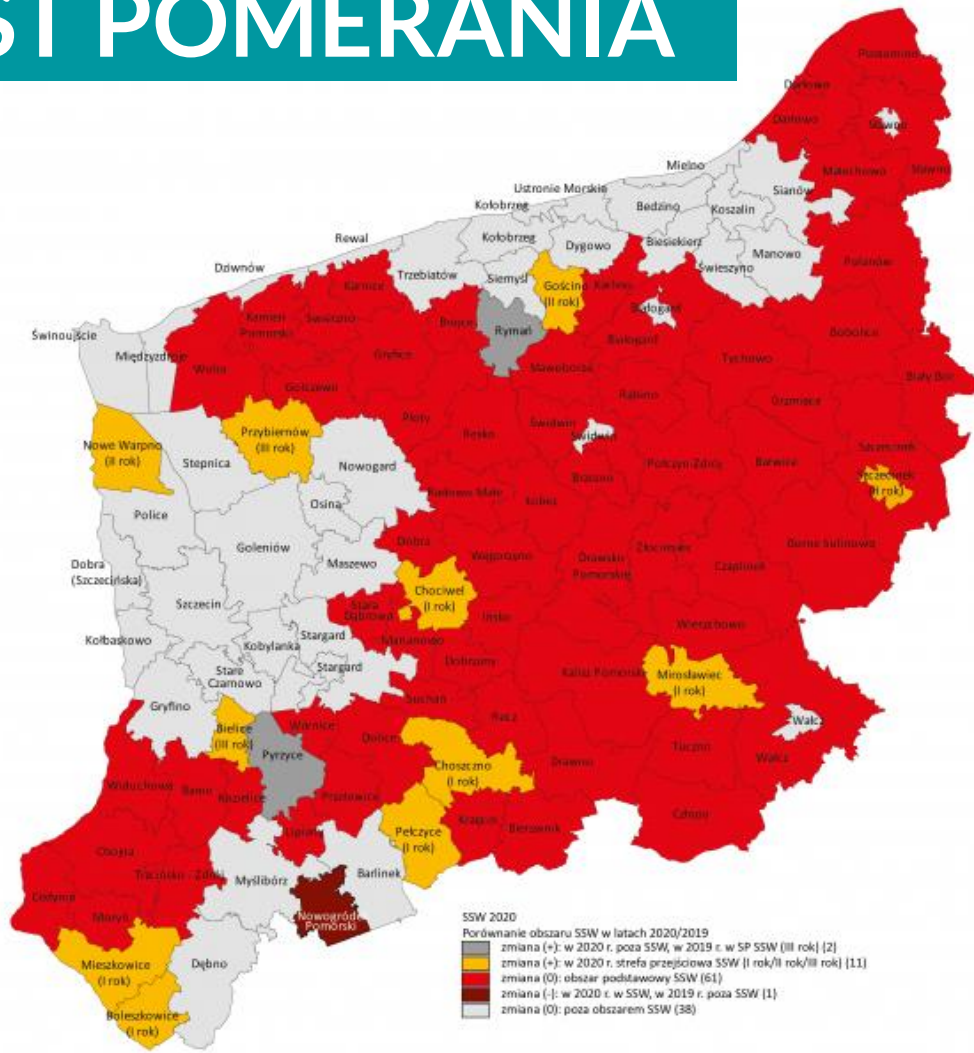
Membership:



WEST POMERANIA



Sieć Zachodniopomorska Ośrodków
Wsparcia Ekonomii Społecznej



113 local communes

Region with uneven distribution of
the city network

94% of the area is rural

70% of the population lives in cities
(including 47% in the 10 largest)

Responsibility for public social and
health policy is shared between
municipalities and 21 counties



WEST POMERANIA (POLAND) EXPERIENCE: MAIN VECTORS OF THE SOCIAL IMPACT OF THE SE SECTOR

LOCAL SOCIAL ECONOMY ENTITIES

- local community integration based on cultural activities
- educational activities
- local development and improvement of community life based on the historical and natural tourist values

SOCIAL ENTERPRISES

- social and professional reintegration of people from groups at risk of long-term exclusion (disabled, long-term unemployed, etc.)
- providing social services of general interest

1100 *social economy entities & social enterprises supported by SZOWES*



SCENARIOS OF CREATING SOCIAL IMPACT IN LOCAL COMMUNITIES BY THE SOCIAL ENTREPRENEURSHIP

EVOLUTION vs. CONTROLLED REVOLUTION

KEY FACTORS :

- real social need
- belief in agency
- courage
- readiness for change
- readiness to share risk & responsibility



... SOMETIMES THESE KEY FACTORS HAVE TO BE EXTERNALLY SUPPORTED AND SHAPED BY A SMALL, SUCCESSFUL EXPERIENCES



We involved 20 000 members of local communities of West Pomerania in 2500 joint local activities



ACCESS TO RESOURCES AND ACTIVE SUPPORT OF LOCAL PARTNERS GENERATES A SCALE EFFECT OF SOCIAL IMPACT



The employment of people with disabilities in the social economy sector of West Pomerania increased by 500% as a result of the implemented investments and the strategic approach of the region.



The positive social impact of the activities of social enterprises is a multidimensional phenomenon.

It is visible not only in the aspect of social and professional reintegration aimed at creating opportunities for people at risk of exclusion.

Through the consistent improvement of the quality and availability of services generated by social enterprises and sustainable, participatory approach to creating business models, this impact is visible in the area of improving the local quality of life, attractiveness of the local market and sustainable local development focused on proximity and circular approach to economy.

SOCIAL ENTERPRISES ARE TODAY A KEY ACTOR IN BUILDING SUSTAINABLE LOCAL DEVELOPMENT AND GENERATING A POSITIVE SOCIAL IMPACT IN LOCAL COMMUNITIES.



THANK YOU!

Paweł Klimek
pawel.klimek@owes.es



Sieć Zachodniopomorska Ośrodków
Wsparcia Ekonomii Społecznej

